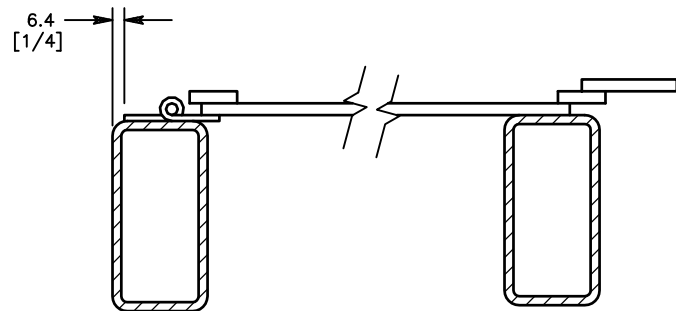


NOTE:  
METAL ARC WELDED CONSTRUCTION.

MILLIMETERS  
INCHES



VIEW **A-A**  
SCALE = 1/2

SNIF T-3	D-2032001
USED ON	ASSEMBLY DRAWING

E	BM WAS ON DWG. RETYPED IN LOTUS NOTES	ECN - S903	A.B.	M.J.F.	T.B.	8-12-99
D	REDRAWN ON CAD	ECN - S290	A.B.	M.J.F.		5-31-90
REV	DESCRIPTION	BY	CHK'D	APP'D	DATE	

BUSINESS CONFIDENTIAL THIS DRAWING AND THE INFORMATION CONTAINED THEREIN ARE THE PROPRIETARY AND CONFIDENTIAL PROPERTY OF PYROTEK, INC. AND MAY BE USED ONLY FOR AUTHORIZED PURPOSES. THIS DRAWING MAY NOT BE REPRODUCED WITHOUT PYROTEK'S PRIOR WRITTEN CONSENT.			<b>Pyrotek</b> SNIF® SYSTEMS 765 OLD SAW MILL RIVER ROAD TARRYTOWN, NY 10591-6720		
TOLERANCES UNLESS OTHERWISE SPECIFIED INCH DIMENSIONS FRAC ± 1/16 DEC ± .005 ANGLE ± 0.5° METRIC DIMENSIONS 0 mm = ± 0.0 mm = ± 63° ALL SURFACES MAX. ROUGHNESS -REMOVE ALL BURRS -BREAK ALL SHARP EDGES			NAME DRAWN <b>JAHD</b> CHECKED <b>P.A.</b> APPROVED <b>J.V.G.</b> SIMILAR TO	DATE 4-22-77 5-2-77 5-2-77	TITLE: <b>SPARE NOZZLE STAND ASSEMBLY</b>
			<b>D-2031978</b>		
			SCALE 1/8	SHEET 1 OF 1	REV E